



BODY HUSH

S H A P E W E A R

*Our Solution  
is your Secret!*



The Catwalk Panty  
BH1503

S H A P E  
YOUR LIFE

---

BODY HUSH HAS *successfully*  
CREATED A FANTASTIC  
LINE OF *shaping* PRODUCTS  
WITH A FRESH & MODERN  
APPROACH TO THE  
ESSENCE OF SHAPEWEAR.





# GLAMOUR

COLLECTION

SEXY & SENSUAL, THIS  
LINGERIE-INSPIRED *collection*  
MAKES ANYONE FEEL  
GLAMOROUS

The Slenderizing Slip  
BH1502L



BH1602L

## / The Allure Cami

Radiate confidence in this luxurious lace-trimmed satin camisole

LYCRA® BEAUTY fabric and invisible panels trim your waist and tummy

- Perfect base layer that flatters your bust. Adjustable straps



BH1502L

## / The Slenderizing Slip

Streamline your figure with this lace detail slenderizing slip

Inside panel slims your tummy, waist line and love handles

- Designed to give an extra bust lift and support, Wear your own bra!



## GLAMOUR COLLECTION

*The* ULTIMATE  
COUTURE  
LINGERIE LOOK  
*with* SHAPEWEAR  
FUNCTIONALITY.

FABRIC:  
53% LYCRA® BEAUTY  
& 47% Nylon

SIZES:  
S, M, L, XL, 2XL, 3XL

COLORS:



Black    Nude

GLAMOUR  
COLLECTION

OUR TONE *on*  
TONE SATIN  
*accents* MAKE YOU  
SHINE UNDER  
ANY LIGHT.

FABRIC:  
53% LYCRA® BEAUTY  
& 47% Nylon

SIZES:  
S, M, L, XL, 2XL, 3XL

Style **BH1507MS** also  
available in sizes 4XL & 5XL

COLORS:



Black    Nude



BH1503MS

*The Catwalk  
Panty*

Targeted fused panels provide a total  
transformation to tummy, waist and bum

- Fused waist band does not roll down!



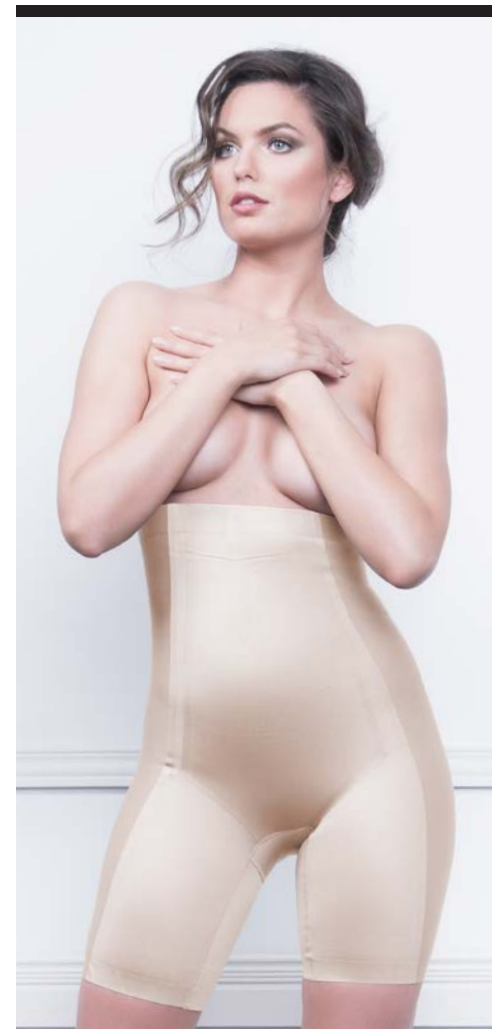
BH1505MS

*The One & Only  
Thigh Slimmer*

Treat yourself in this sexy and silky  
bottom

Targeted support panels provide elegant  
tummy and thigh control

- Ideally worn under skirts and dresses



BH1507MS

*The Most Wanted  
Thigh Control\**

Targeted fused panels provide a total  
transformation to tummy, bum & thighs

- Fused waist band does not roll down!

\* Available also in 4XL & 5XL





BH1506MS

## / The Lift and Slim *Cami*

Start your day with this shaping cami

LYCRA® BEAUTY fabric provides ultimate every day comfort

- Trims waist and love handles
- Designed to give an extra bust lift and support, Wear your own bra!



BH1508MS

## / The Mermaid *Half Slip*

This high-waisted Slip with intergrated seamless panty uses a luxurious satin fabric

This fantastic new style features the Body Hush signature waist band which does not roll and is incredibly comfortable!



BH1501MS

## / The Star Body *Shaper*

Streamline your figure with this targeted shaping body

Provides All-in-One support to tummy, waist line, bum and thighs

- Designed to give an extra bust lift and support, Wear your own bra!



BH1502MS

## / The Slenderizing *Slip*

Flaunt your figure with this ultimate shaping slip

Targeted fused panels streamline your figure while its sleek fabric makes you feel sexy

- Designed to give an extra bust lift and support, Wear your own bra!







The Couture Slip  
BH1702



# MAGNIFIQUE

COLLECTION

---

*A materialized* FANTASY, *a* SYMBOL  
of GENUINE LUXURY,  
ELEGANCE & QUALITY.  
BODY HUSH MAGNIFIQUE  
TAKES YOU TO THE *place where*  
PEOPLE DREAM.



BH1701

## / The Sensuelle Panty

Radiate confidence in this Sheer and Sensual panty with a barely there feel

- Features the Body Hush signature waist band which doesn't roll and is incredibly comfortable!
- Part of the Magnifique assortment, Body Hush premier luxury Collection



BH1706

## / The Icône Panty

Body hugging high waist panty delicately crafted with a luxurious sheer fabric

Sheer power-control sculpts tummy, waist and derrière

- Features the Body Hush signature waist band which doesn't roll and is incredibly comfortable!
- Part of the Magnifique assortment, Body Hush premier luxury Collection



BH1702

## / The Couture Slip

Indulge your desires in this slenderizing slip

A sexy and modern update of the slenderizing slip which gently streamlines the body giving you your utmost appeal

- Embellished with a delicate bow and rhinestone
- Part of the Magnifique assortment, Body Hush premier luxury Collection
- Wear your own bra!



BH1707

## / The Oui, Oui Shaper

Sexy sophistication inspires the diamond and floral lace motif in this magic ultimate shaper

Sheer power-control sculpts tummy, waist and derrière

- Features the Body Hush signature waist band which doesn't roll and is incredibly comfortable!
- Part of the Magnifique assortment, Body Hush premier luxury Collection



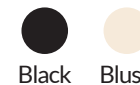
## MAGNIFIQUE COLLECTION

*Sophisticated*  
SLIP/PEWEAR  
MADE *from*  
EUROPEAN  
ENGINEERED  
DIAMOND *control.*

FABRIC:  
53% Polyamide  
& 47% LYCRA® BEAUTY

SIZES:  
S, M, L, XL, 2XL, 3XL

COLORS:



Black Blush





The Wonder Woman  
BH1807 *High Waist long leg*

# AIR

COLLECTION

---

BODY HUSH AIR *offers everyday*  
SHAPING WITH A BARELY THERE  
FEEL. IT'S *Ultra-Sheer* SCULPTING  
POWER IS DESIGNED WITH *targeted*  
SHAPING SUPPORT.



BH1804

## / The Runway Thong

Inside fused panels gives extra tummy control and eliminates muffin top

Incredibly comfortable laser cut edges and fused finishes avoid visible panty lines

- Soft, silky fabric neither feels nor looks like shapewear!



BH1801

## / The Everyday Contour Panty

The Ultra-Sheer Everyday control panty

Incredibly comfortable laser cut edges and fused finishes avoid visible panty lines

- Inside fused panels gives extra tummy control
- Soft, silky fabric neither feels nor looks like shapewear!



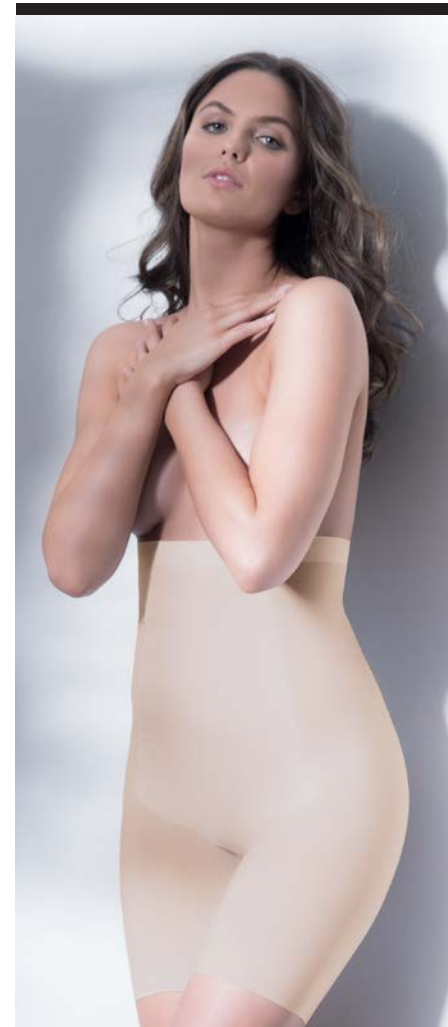
BH1809

## / The Stand out Boyshort

Inside fused panels gives extra tummy and thigh control while shaping the bum

Incredibly comfortable laser cut edges and fused finishes avoid visible panty lines

- Ideal for anything you have going on in your day!



BH1807

## / The Wonder Woman High waist long leg

This Ultra-Sheer high-waisted mid-thigh short uses sculpting compression zones to flatten the tummy, smooth the thighs, and streamline the silhouette.

This incredible style includes our Body Hush signature no-roll fused waist band.





BH1808

## / The Game on *Leisure Bra*\*

Crazy Comfortable bra designed to give support with maximum softness.

Seam-free fused finishes lay flat against the skin providing a comfortable lift. Versatile and Wire-free, you'll never want to take this bra off!

\* Available also in 4XL & 5XL



BH1805

## / The Check me out *Thigh Slimmer*

Ultra-Sheer Thigh Slimmer designed with targeted shaping support.

This fantastic style was engineered to target the lower tummy, bum and thighs.



BH1802

## / The Swept-Away *Slip*

An innovative take on our Slenderizing slip.

Targeted fused panels in this Ultra-Sheer fabric will slenderize your figure with a barely there feel.

- It's open bust design will allow you to wear your own favorite bra while giving you extra bust support.



AIR  
COLLECTION  
BODY HUSH I  
*AIR sculpting*  
POWER HAS  
*a BARELY*  
THERE FEEL.

FABRIC:  
55% LYCRA® BEAUTY  
& 45% Nylon

SIZES:  
S, M, L, XL, 2XL, 3XL

Style BH1808 also  
available in sizes 4XL & 5XL

COLORS:





The Sculptor  
BH1607 *All in One*

# GOLD

COLLECTION

---

BODY HUSH GOLD *collection*  
HAS *reinvented* SEAMLESS  
SHAPEWEAR *and* HAS CREATED  
LIGHTWEIGHT & POWERFUL  
*yarns* WITH ENGINEERED  
ZONED SHAPING THAT *smooth*  
YOUR NATURAL CURVES.



## GOLD COLLECTION

STRATEGICALLY  
ENGINEERED  
*compression* LEVELS  
SLIMS *and* TONES  
YOUR FIGURE  
WHERE *needed*  
THE MOST

FABRIC:  
53% LYCRA® BEAUTY  
& 47% Nylon

SIZES:  
S, M, L, XL, 2XL, 3XL

COLORS:

Black Nude White Charcoal



BH1403

### Superior Derriere *Legging*

Combines the comfort of a legging while sculpting the figure

Slims tummy and waist eliminating the muffin top look.

- Lifts and shapes your thighs and derriere
- Not available in 2XL & 3XL



BH1606

### The Pinup *Panty*

Your ideal everyday high waist panty is here!

Engineered control levels target strategic parts of the body which need it the most while emphasizing others.

- Anti-slipping inside band designed to prevent rolling



BH1607

### The Sculptor *All in One*

Your complete foundation has never been fit this well, light as Air

Engineered control levels target strategic parts of the body which need it the most while emphasizing others.

- Anti-slipping inside band designed to prevent rolling





BH1603

## /The Must-Have *Cami*

Your new essential underpin cami!

Light as AIR with fabric softness provides optimum comfort all day, every day.

- *Decorative neckline elastic gives a smooth transition to skin*
- *Graduating control levels target and contour strategic parts of the body*



BH1608

## /The Street-Smart *Cami*

The best base layer! Blazer-perfect and weekend-ready

This Seamless cami with its decorative lace trim, will provide you with the everyday smoothing confidence you need while looking fabulous!



BH1401

## /The Fantastik *Tank*

Seamless shaping tank contours and smooths your body comfortably

Perfect for every day, this tank contains Bio-Crystal technology which helps reduce the signs of cellulite while styling the figure.

- *Perfect for layering and for anything you have going on in your day!*



BH1402

## /The Arm Toner *Cami*

Much more than a top

This cami smooths your upper torso giving you a firmer look

- *Contains Bio-Crystal technology which helps reduce the signs of cellulite while styling the figure in tummy and arms*





## The 365 Panties

*Panty* BH1901

*Bikini* BH1902

*Thong* BH1903

# 365 PANTIES

COLLECTION

---

*The* WORLD'S MOST *comfortable*  
WOMEN'S PANTIES, MADE  
WITH A LUXE SHEER *fabric* &  
*elastic-free* EDGES WHICH MAKES  
THEM *totally* INVISIBLE UNDER  
ANYTHING.





BH1903

## The 365 *Thong*

The world's most comfortable thong!

Made with a luxe sheer fabric and elastic-free edges which makes it totally invisible under clothing.

- Buttery soft and seam-free comfort will make you feel like never before!



BH1902

## The 365 *Bikini*

The world's most comfortable bikini!

Made with a luxe sheer fabric and elastic-free edges which makes it totally invisible under clothing.

- Buttery soft and seam-free comfort will make you feel like never before!



BH1901

## The 365 *Panty*

The world's most comfortable panty!

Made with a luxe sheer fabric and elastic-free edges which makes it totally invisible under clothing.

- Buttery soft and seam-free comfort will make you feel like never before!



## 365 Panties COLLECTION

THE MOST  
*comfortable* EVERYDAY  
PANTIES *made*  
SEAMLESS &  
ELASTIC FREE *which*  
*makes them* TOTALLY  
INVISIBLE UNDER  
ANYTHING

FABRIC:  
55% LYCRA® BEAUTY  
& 45% Nylon

SIZES:  
S, M, L, XL, 2XL, 3XL

COLORS:



The 365 Bikini  
BH1902

## International size chart

	US/CAN	UK	EUR
S	2-4	6-8	38-40
M	6-8	10-12	42-44
L	10-12	14-16	46-48
XL	14-16	18-20	50-52
2XL	18-20W	22-24	54-56
3XL	20W-22W	26-28	58-60
4XL*	24W-26W	30-32	62-64
5XL*	28W-30W	34-36	66-68
	CHEST	WAIST	HIPS
S	33.5-35.5	26.5-28.5	36-37.5
M	36-38	28.5-32	38-40.5
L	38.5-40.5	33-34	41-43
XL	41-44	35-37	44-46
2XL	46-48	39-41	48-50
3XL	48-50	41-43	50-52
4XL*	52-54	45-47	54-56
5XL*	56-58	49-51	58-60
	BRA		
S	32A, 34A, 32B		
M	36A, 34B, 32C		
L	36B, 38B, 36C		
XL	36C, 32D, 34D		
2XL	38C, 40C, 36D, 38D		
3XL	32DD, 34DD, 32E, 34E		
4XL*	36DD, 38DD, 36E, 38E		
5XL*	40DD, 42DD, 40E, 42E		

\*Sizes 4XL & 5XL only available for  
styles BH1507MS & BH1808



---

BODYHUSH.COM  
sales@bodyhush.com  
1-800-565-7462 X 118

